



# Population Ageing in East Asia

## Population dynamics and policies

*Rintaro Mori MD PhD MSc FRCPCH*

*Regional Adviser for Population Ageing and Sustainable Development,*

*Asia-Pacific Regional Office, UNFPA*

*(Professor in Health Policy for Children and Families, Kyoto University)*

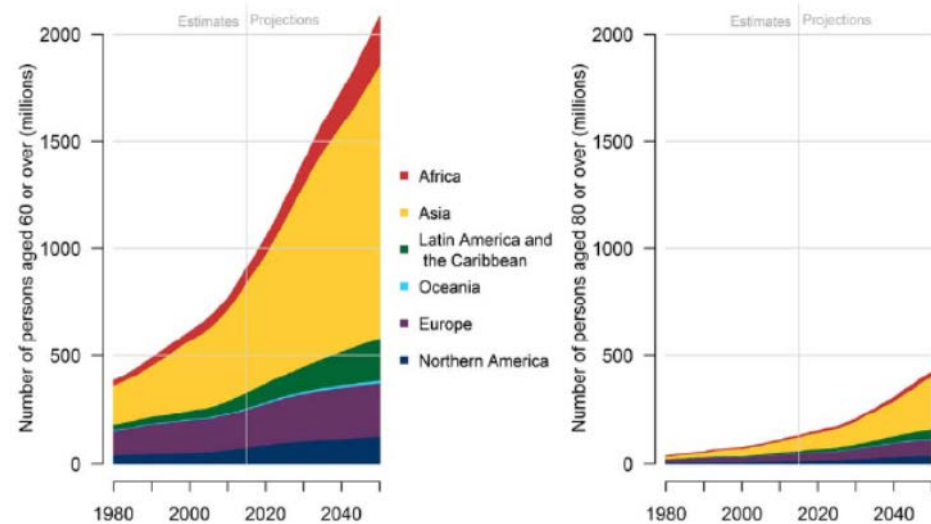
# Rapid population ageing in Asia-Pacific

Asia-Pacific Region:

547 million people aged 60 and older in 2017

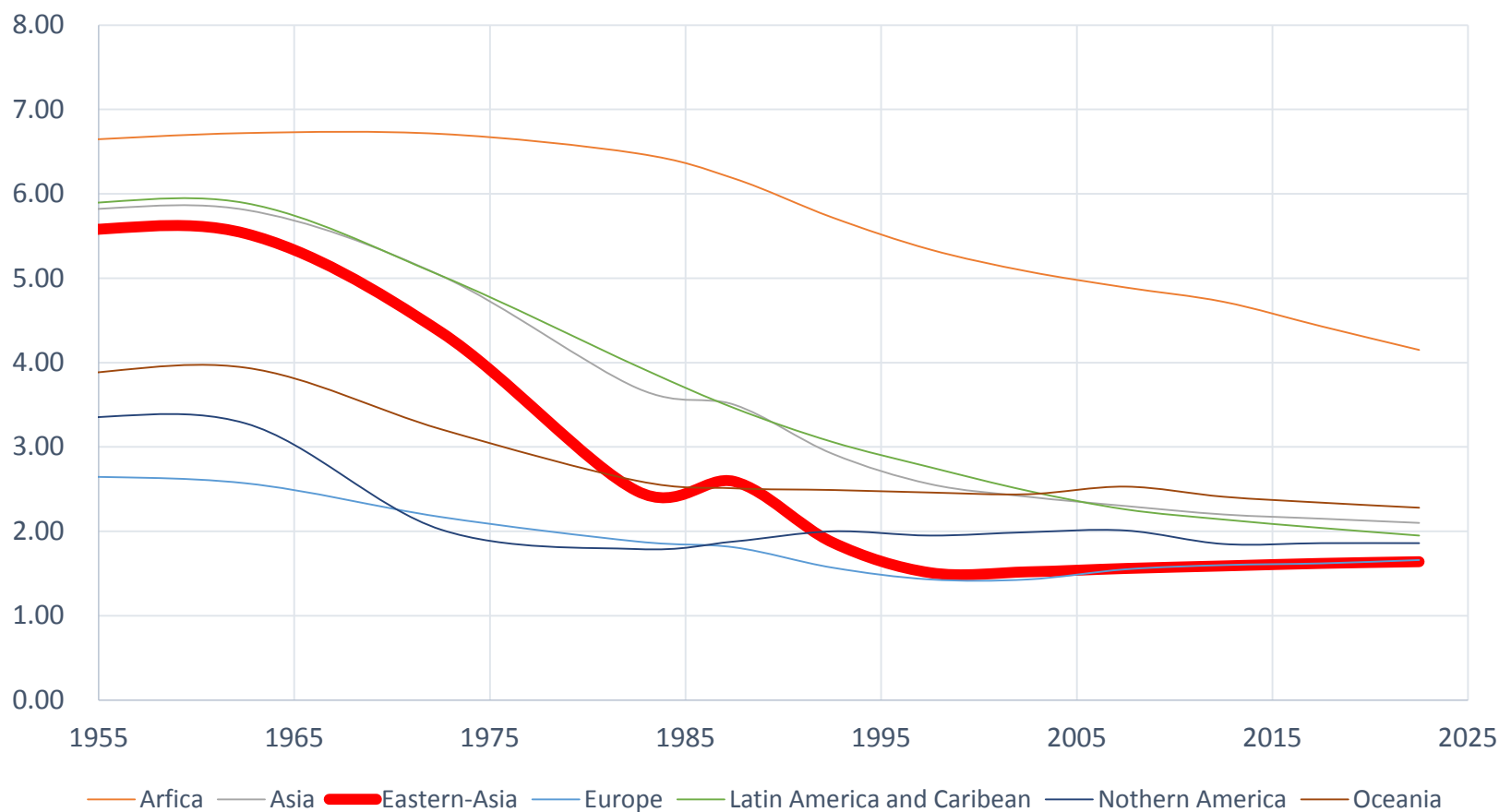
1.3 billion by 2050 (1 in 4 – 60 years or older)

Figure II.2.  
Number of persons aged 60 years or over and aged 80 years or over for regions, 1980-2050

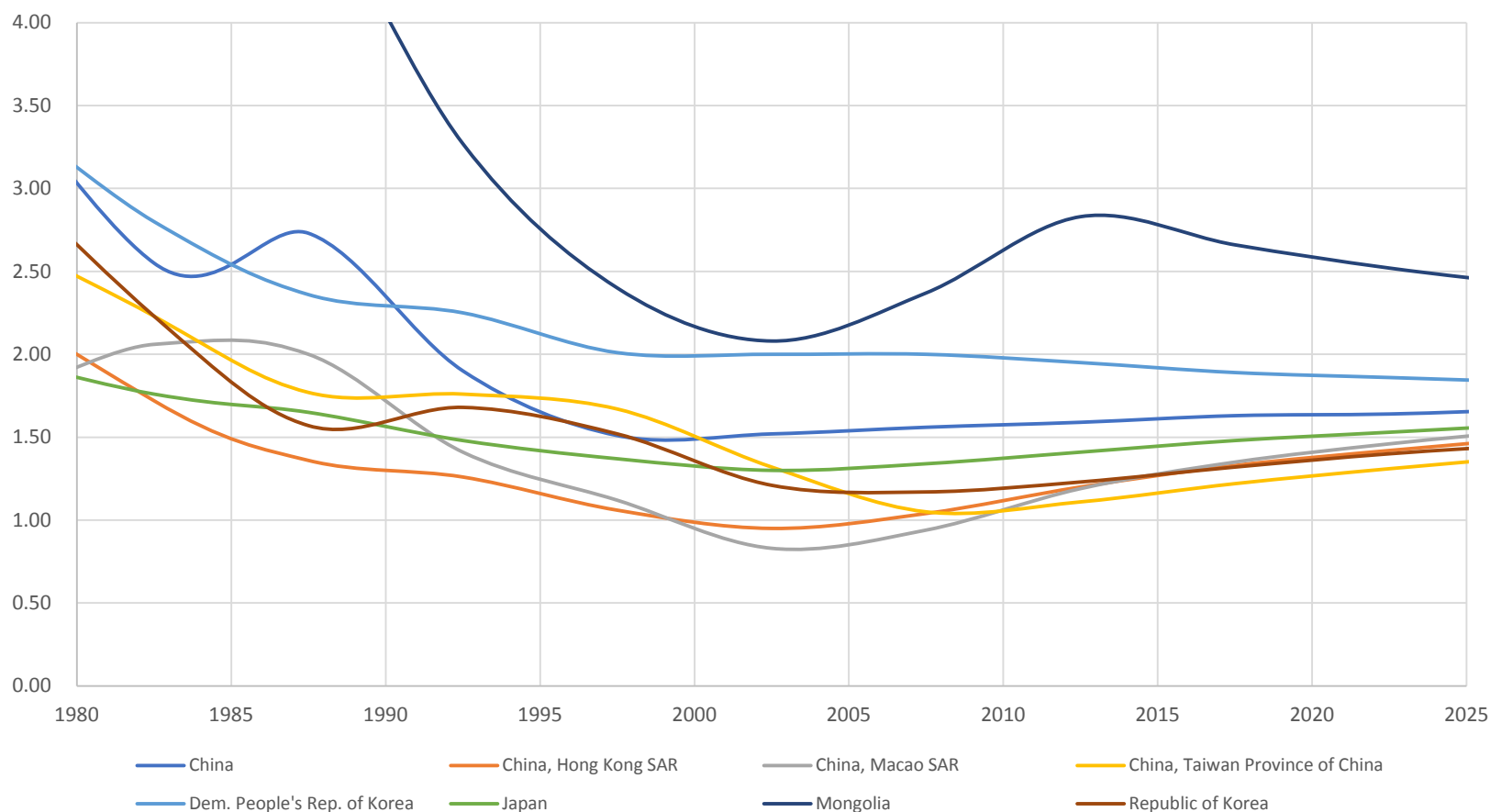


Data source: United Nations (2017). *World Population Prospects: The 2017 Revision*.

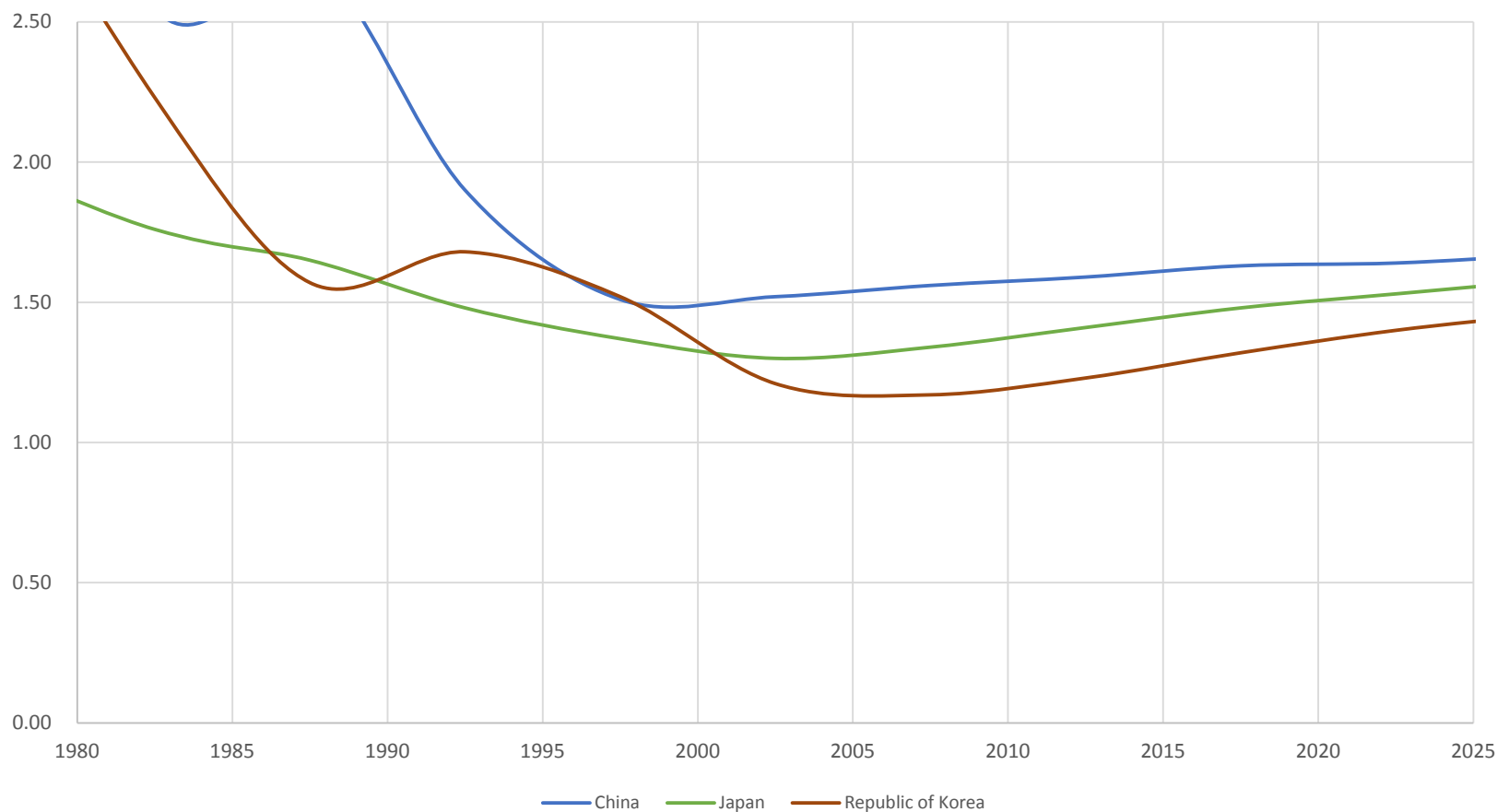
# Total fertility (Livebirth per women, world, 1950-)



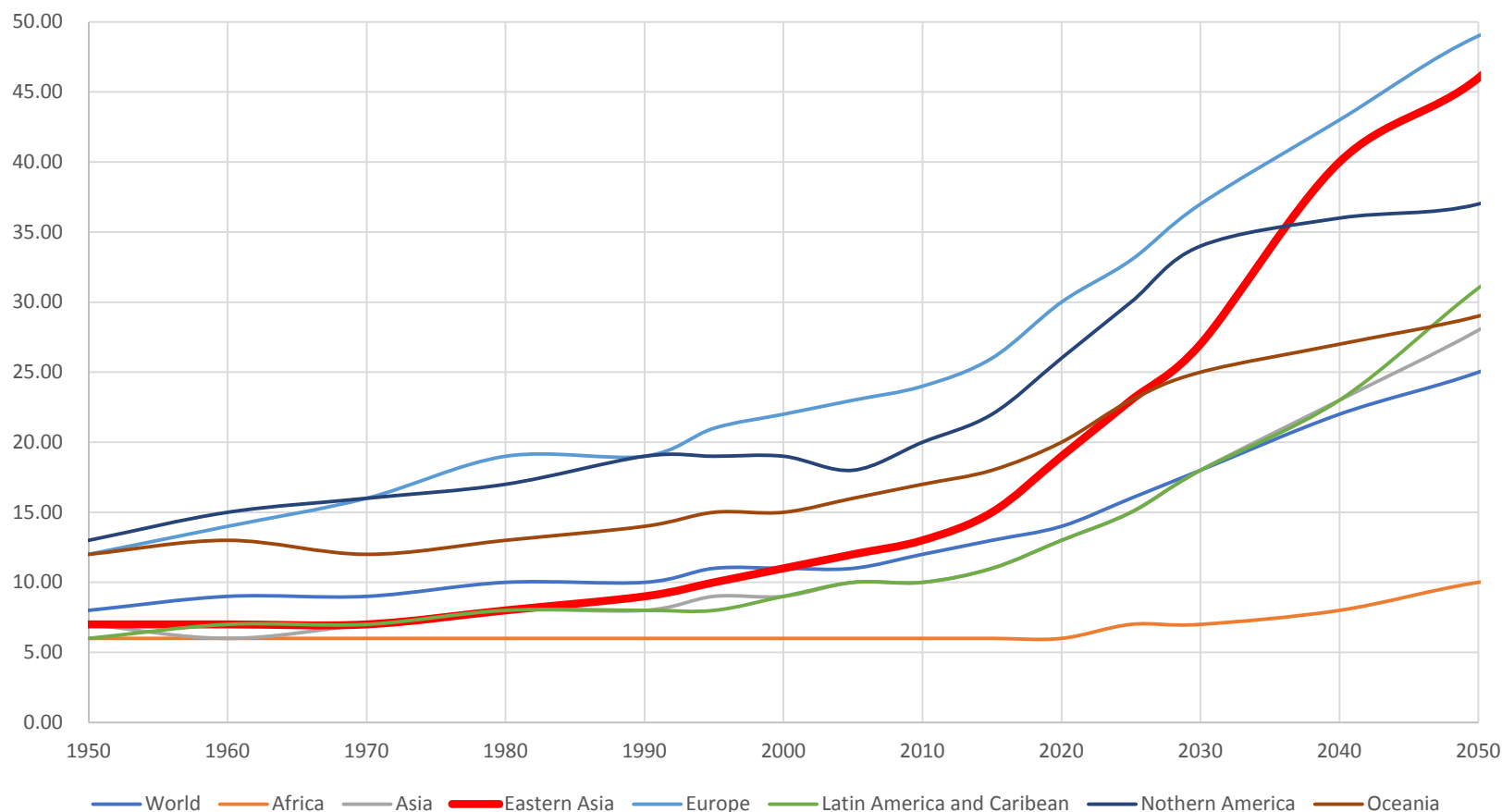
# Total fertility (Livebirth per women, Eastern Asia, 1950-)



## Total fertility (Livebirth per women, China, Japan, Republic of Korea, 1980-)

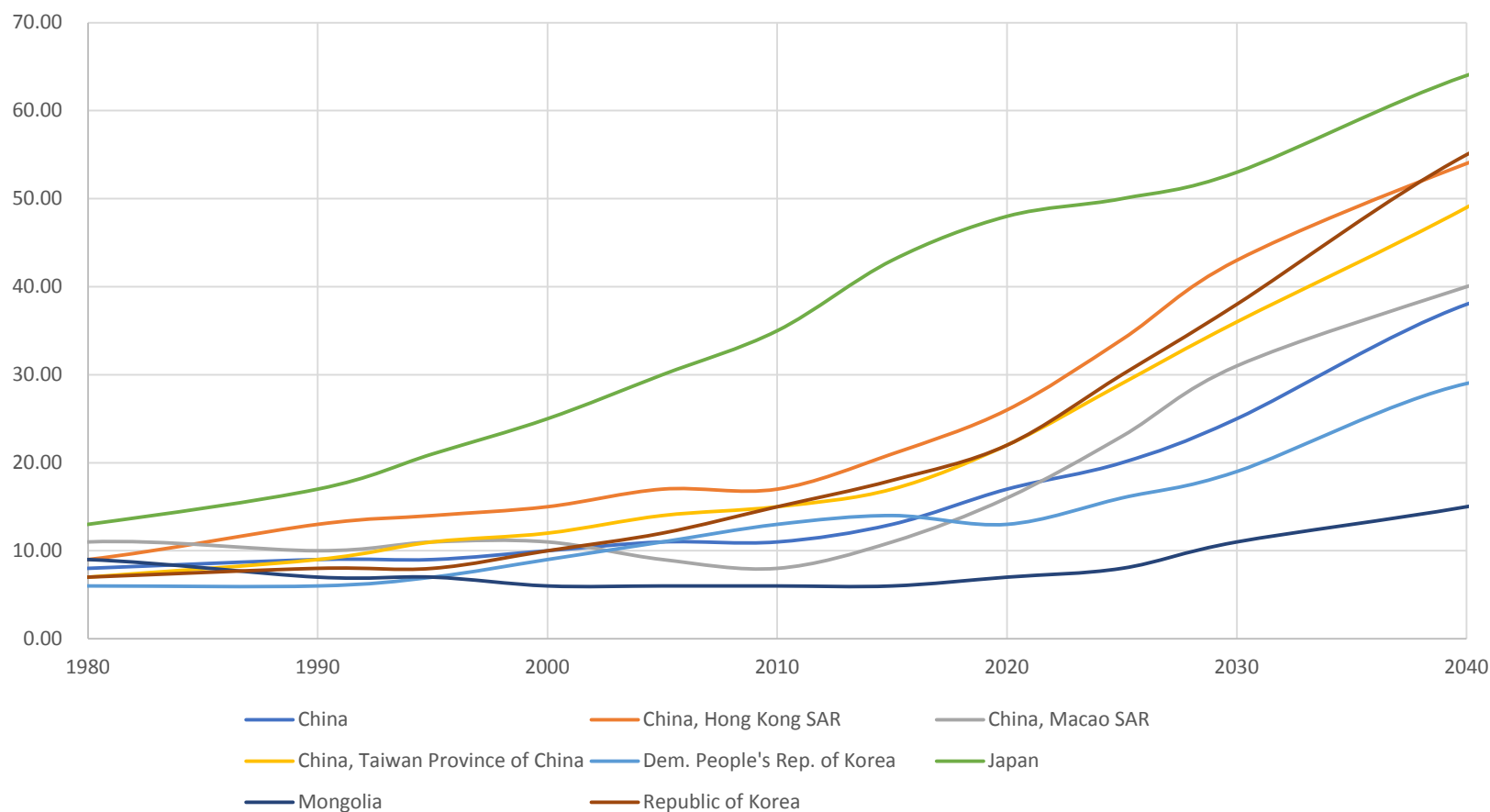


# Old-age dependency ratio\* (World, 1950-2050)

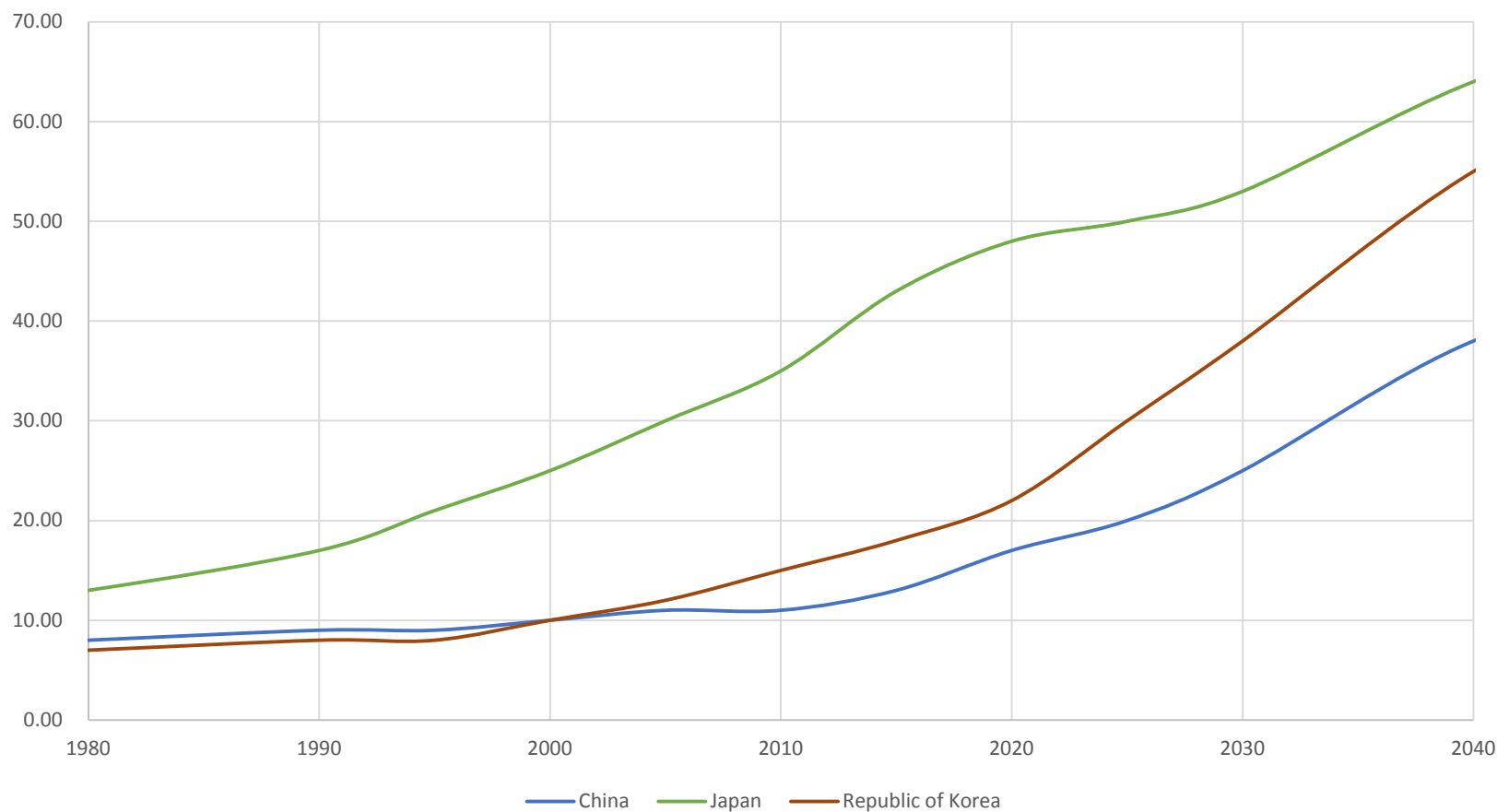


*The ratio of the population aged 65 years or over to the population aged 15-64. They are presented as number of dependents per 100 persons of working age*

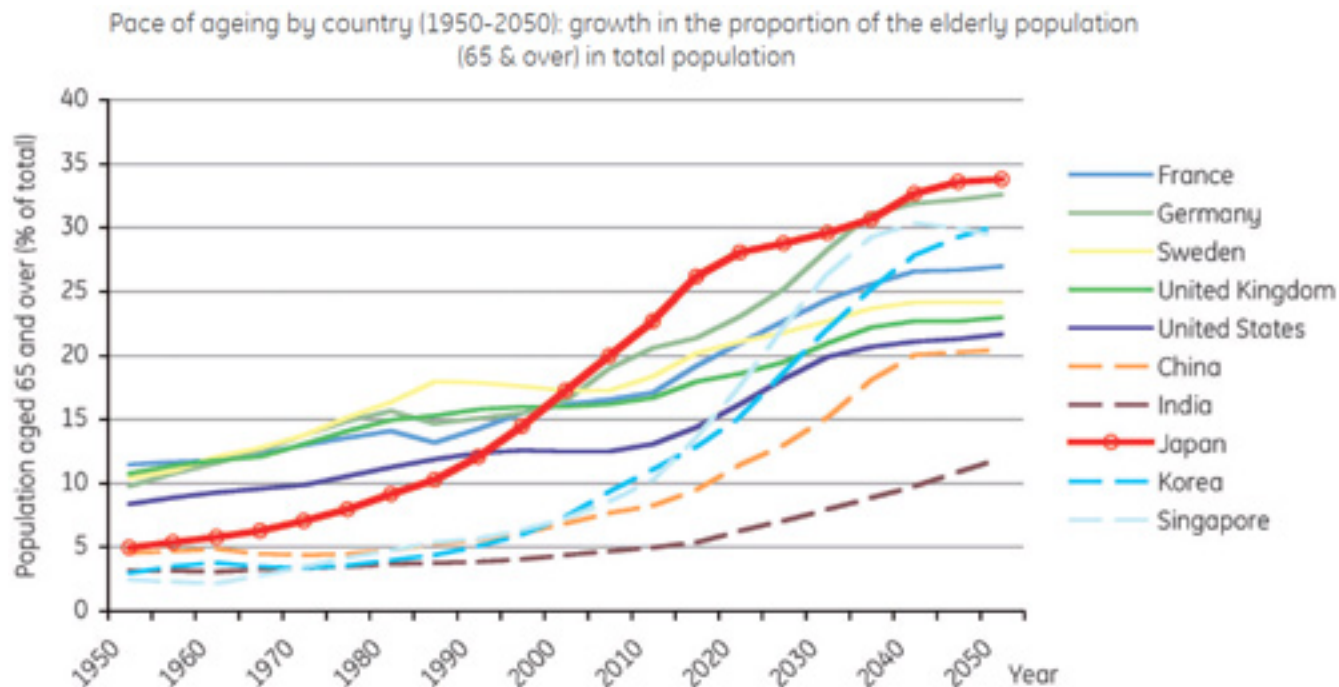
# Old-age dependency ratio (Eastern Asia, 1980-2040)



## Old-age dependency ratio (China, Japan, Republic of Korea, 1980-2040)



# Rapid population ageing (China, Japan, Republic of Korea)

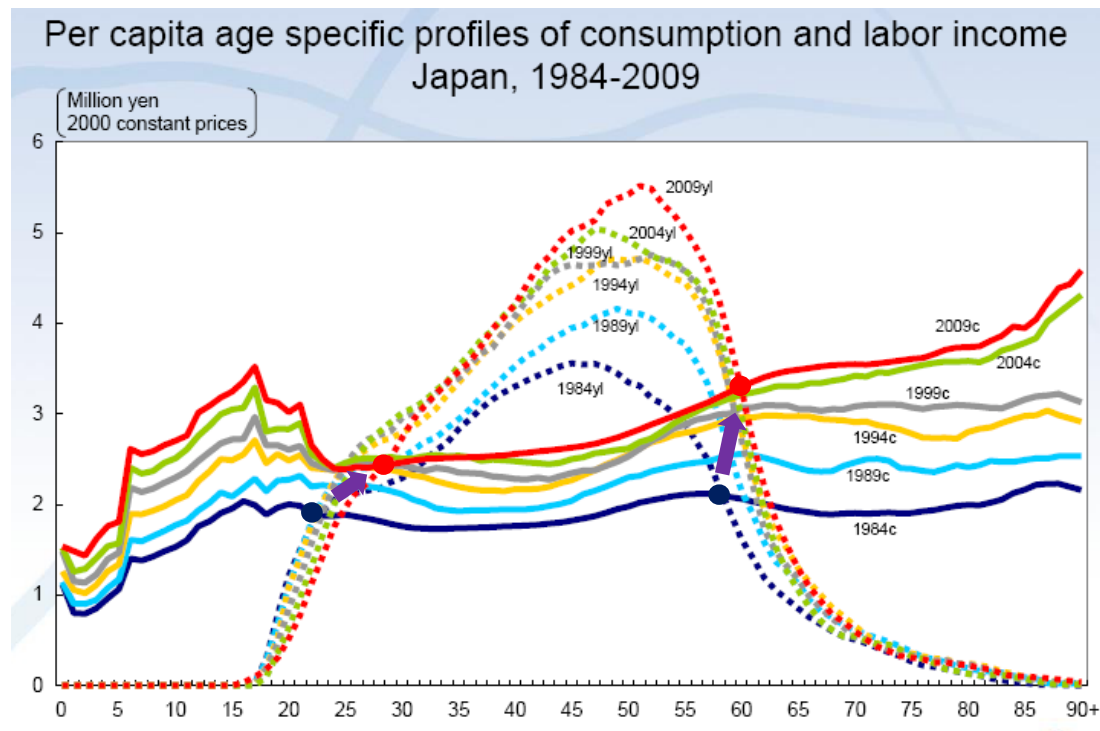


# Policy in ageing in Japan

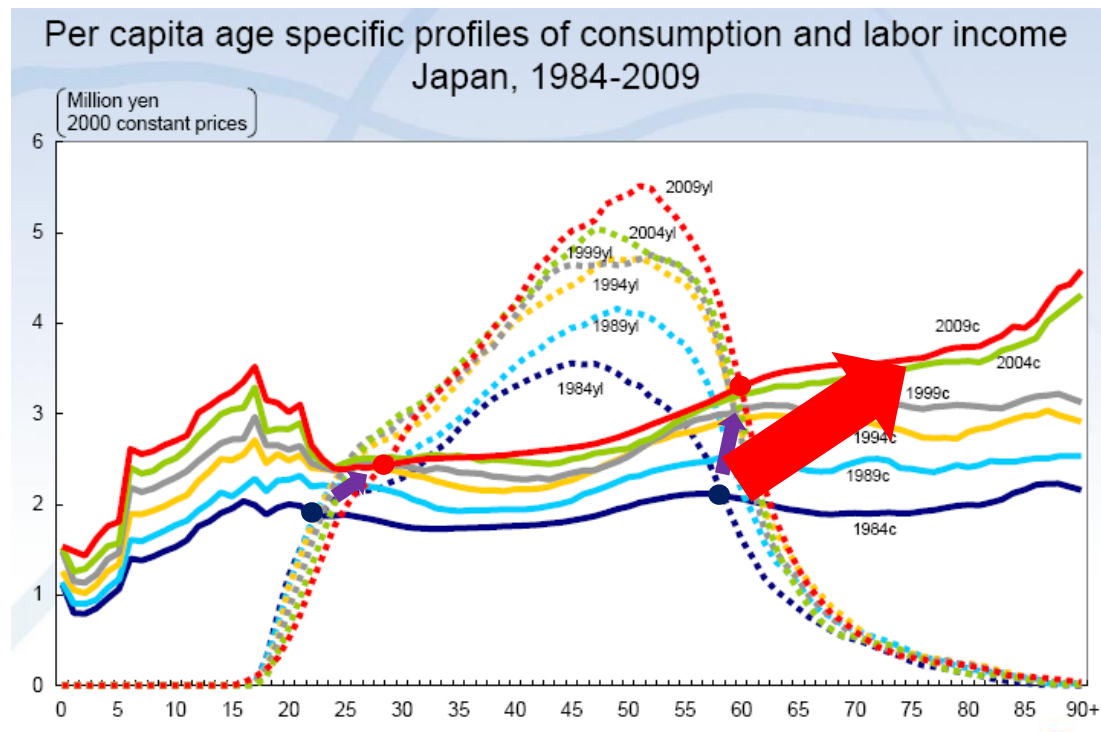
Year	Policy and laws	Healthcare	Welfare			
			Institutions	Home care	Community	Well-being
1948	Community health workers law					
1951	Social welfare law					
1958	National health insurance law					
1963	Older persons' welfare law					
1971	Adult employment special law					
1983	Older person's health law					
1986	National strategy for longevity					
1989	10 years' strategy (Gold Plan)					
1994	Revised 10 years' strategy (New Gold Plan)					
1995	National strategy for aged society					
1999	New 5 years' strategy (Gold Plan 21)					
2000	Long-term care insurance					

Currently Ageing department is directly under the cabinet office

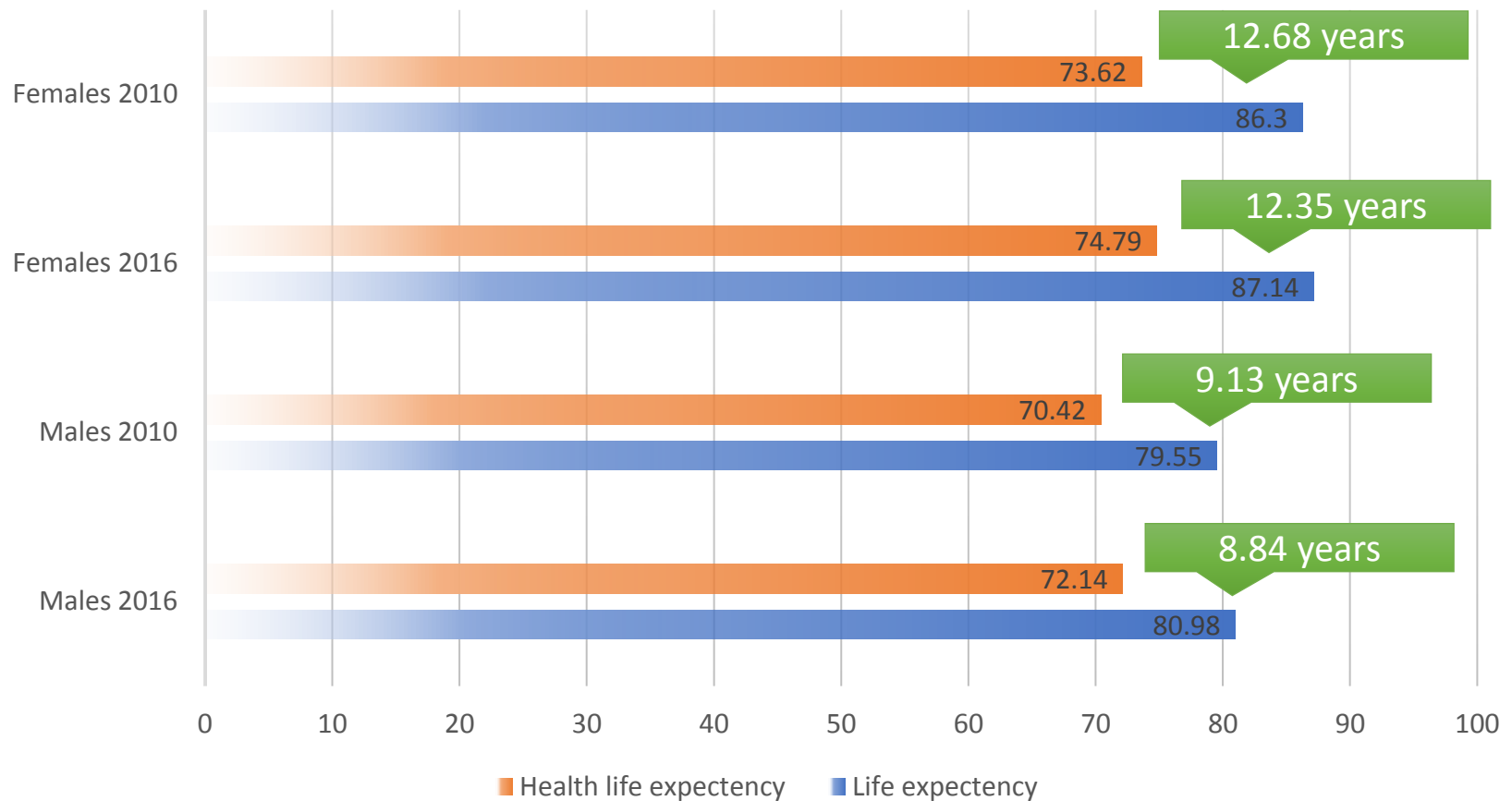
# Age specific profiles of consumption and labour income (Japan)



# Age specific profiles of consumption and labour income (Japan)



# Life expectancy and healthy life expectancy defined by full ADL (Japan)



# Determinants for Health Ageing (Systematic Review)

Categories	Negatives	Positives
Demographic	Age	
Biological	High BMI, Low ABI, Abnormal BP, ADL/IADLs Limitation, Weight changes, Subclinical vascular markers, Diabetes, Comorbidity, Respiratory diseases, Heart conditions, Hearing impairment, Cancer, Bone conditions, History of medication	Better grip strength, High self-rated health, General health status
Behavioral	Smoking	Physical activity, Healthy diet
Psychological	Depression, Negative life events	Better cognitive status, Psychological resources, Life satisfaction, Good general mental health status
Social		Education level, Income and economic status, Higher household SES

Healthy behaviours lead to health ageing

(reproduced from  
ATHLOS consortium 2018)

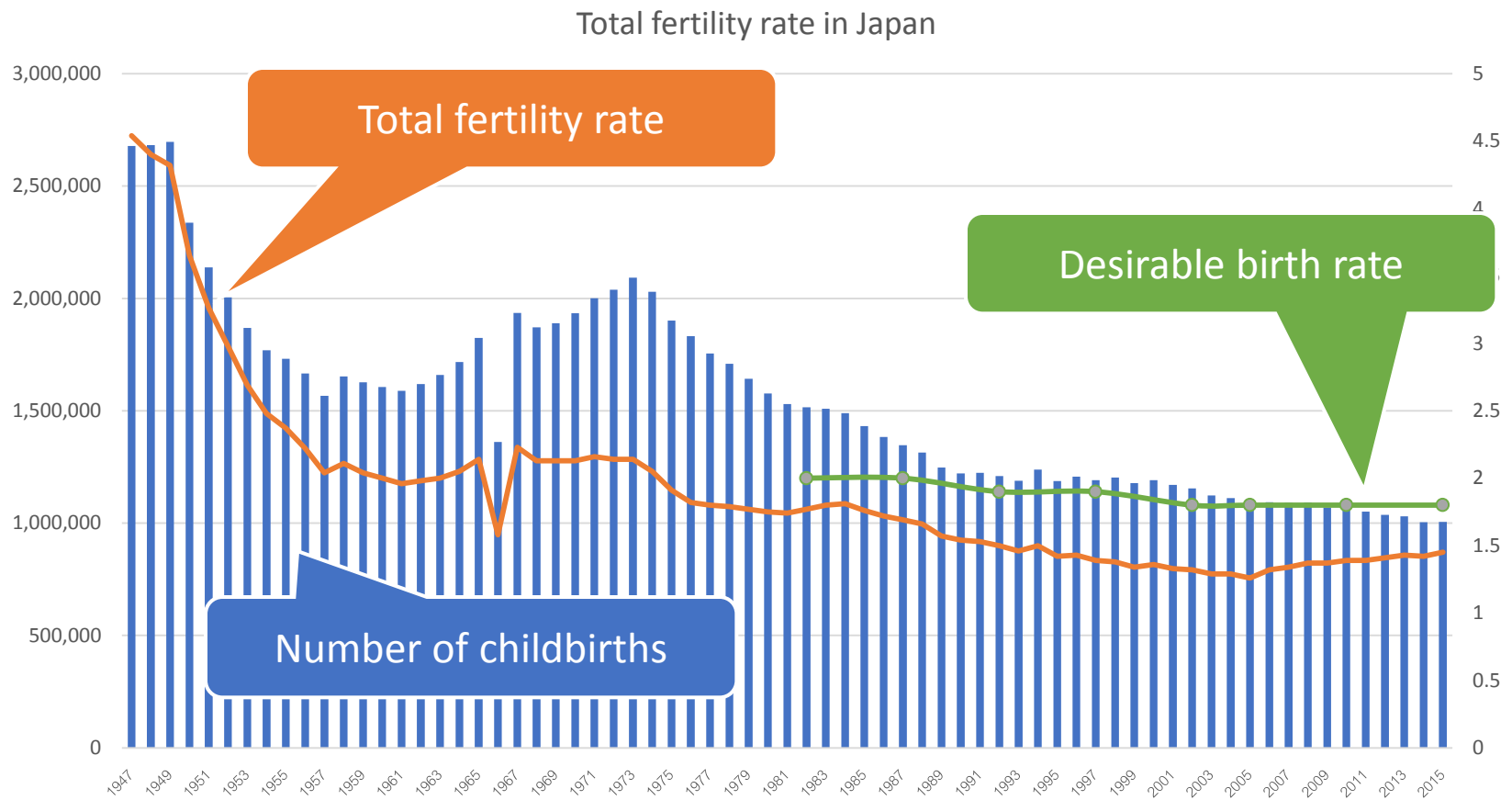
# Overview review of impact of low birth weight on life style diseases in adulthood

Diseases	Methods	N	Results	References
<b>Type II Diabetes</b>	Meta-analysis	14	<2500g: OR 1.32 [1.06, 1.64] >4000g: OR 1.27 [1.01, 1.59]	Am J Epidemiological 2007;165:849
		30	OR 0.80 per 1kg [0.72, 0.89]	JAMA 2008;300:2886
<b>Metabolic Syndrome</b>	Meta-analysis	11	LBW: OR 2.53 [1.57, 4.08]	Rev Saude Publica 2008;42:1
<b>Obesity</b>	Meta-analysis	20	>4000g: OR 2.07 [1.91, 2.24] <2500g: OR 0.61 [0.46, 0.80]*	Obesity reviews 2011;12:525
<b>Childhood obesity</b>	Structured Review	20	Low birth weight and high BMI up to 11 years – highest risk for IHD	Cad Saude Reblica 2006;22:2281

Biological association between perinatal health and NCDs

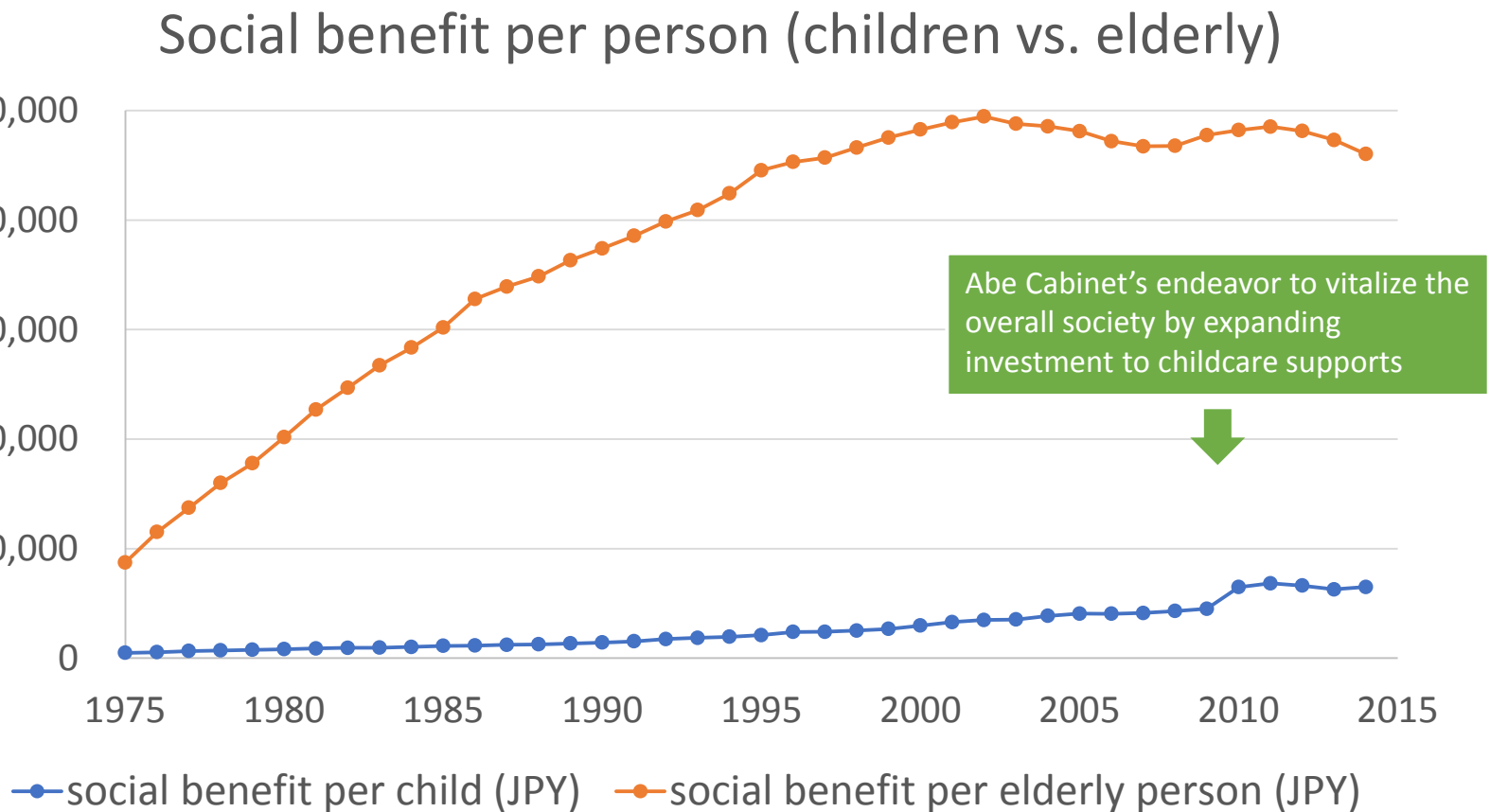
(Mori 2013)

# Fertility rate in Japan (1947-2015)



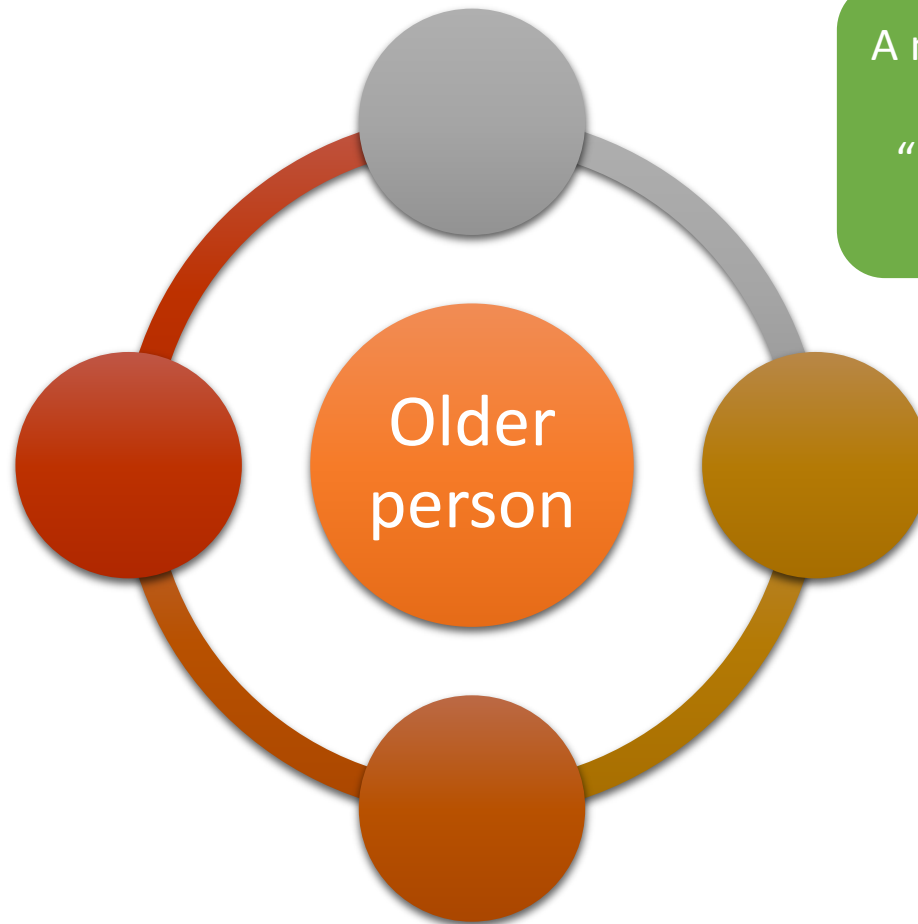
(Data from Statistics Japan 2016 and MHLW 2016)

# Policies targeting ageing should includes support for women and children – our past negative experience



*(Japanese Social Security Statistics 2014)*

Policies targeting older people and ageing,  
where the policy measures are specific to older  
people



A new wider definition  
of a family?  
“Family Planning” in  
wider context?

# Golden windows for behavioural changes

